



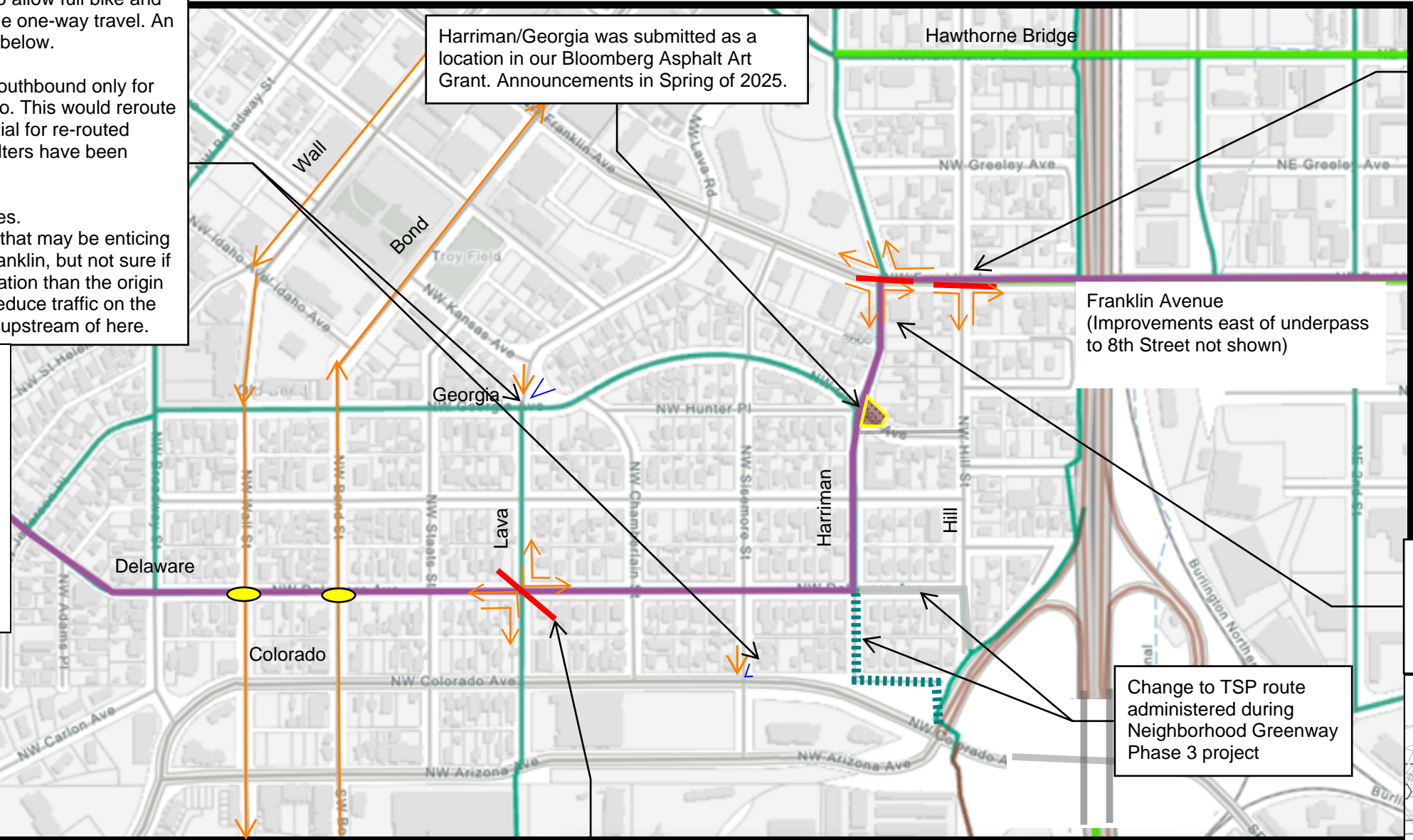
Old Bend Modal Filter Framework

The goal of this plan is to reduce vehicle capacities on TSP identified low stress roads and roads that cross low stress routes. This is done by reducing cut-through traffic between Colorado and Franklin by channeling vehicles to the arterials Wall and Bond.

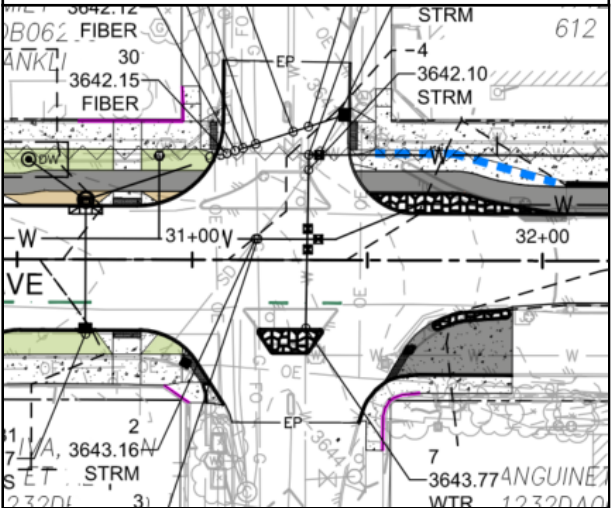
Partial Closures at local road entrances to allow full bike and pedestrian passage but limit vehicles to one one-way travel. An example treatment is shown on the image below.

Sisemore/Colorado with Sisemore being southbound only for vehicles for the half-block north of Colorado. This would reroute ~1,000 vehicles per day. Due to the potential for re-routed traffic to use adjacent local roads, modal filters have been placed north of this location to.

Lava/Georgia to restrict northbound vehicles.
*The idea here is to cut-off the destination that may be enticing to drivers trying to get from Colorado to Franklin, but not sure if having this modal filter closer to the destination than the origin of cut-through traffic would do enough to reduce traffic on the City's adopted Low Stress Network routes upstream of here.

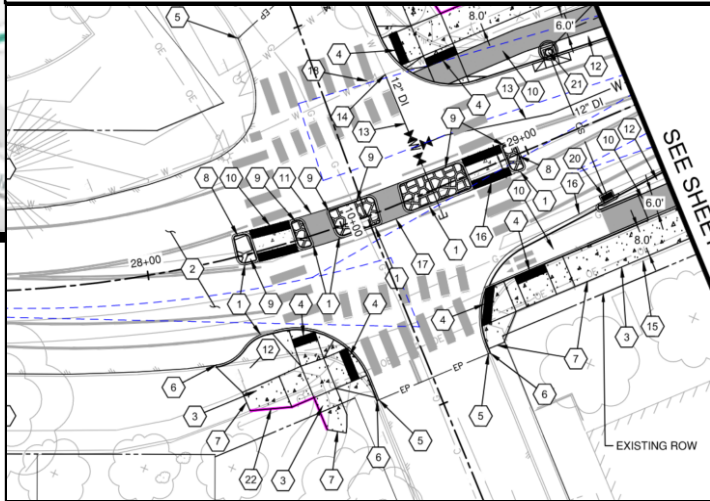


"Pork chop" that currently exists on northside of Franklin at Hill would be removed, opening left turns. The existing "pork chop" on southside of Franklin at Hill will remain, preserving the right-in and right-out for vehicles.



Pedestrian Refuge Island at the Franklin/Harriman.

Draft design is shown on the image below, and includes dedicate pedestrian and bike crossings. Vehicles would be limited to right-in and right-out only.



LEGEND:

- Wide intersection re-organization)
- Transportation System Plan (TSP) Planned Bikeway Network
- Bend Bikeway alignment
- Turning restrictions / Diagonal diverter
- Directional vehicle traffic
- Curb Extension
- Rectangular Rapid Flashing Beacons

Diagonal diverter at the Lava/Delaware intersection. An example treatment is shown on the image to the right.

Modal filter would restrict certain vehicle turning movements to reduce cut-through traffic and conflicts between motor vehicles and people walking/cycling along the Low-stress Network. Green arrows on the map show what vehicle turning movements would be allowed at the proposed diagonal diverter at Lava/Delaware.



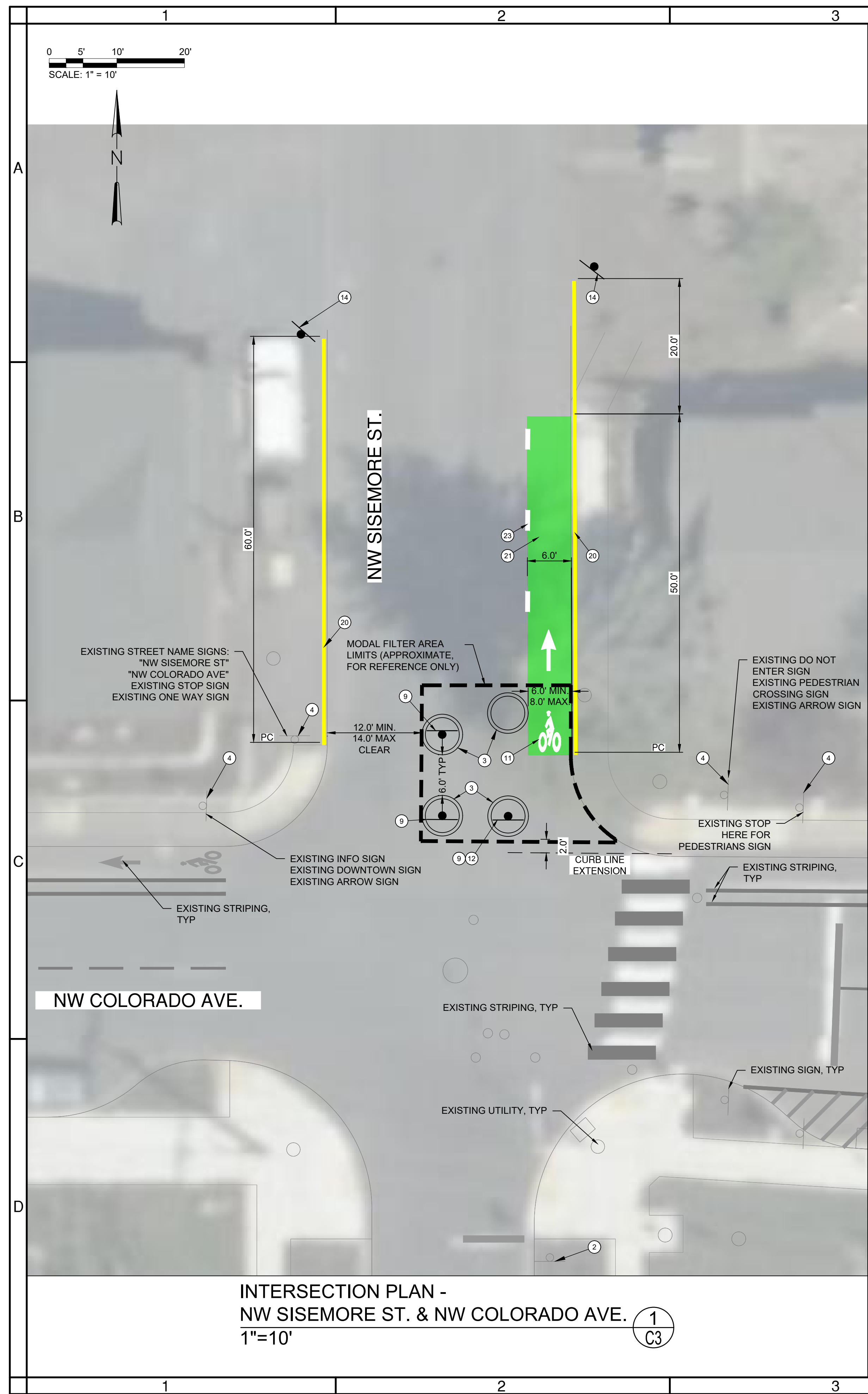
Accommodation Information for People with Disabilities

To obtain this information in an alternate format such as Braille, large print, electronic formats, etc., please contact Kevin Howard at bendbikewayteam@bendoregon.gov or 541-323-0754. Relay Users Dial 7-1-1.



Scan to visit the City of Bend Bikeway Project page.

Escanee para visitar la página del proyecto de ciclovía en Bend.




SUMMARY OF QUANTITIES - COLORADO AND SISEMORE				
ITEM DESCRIPTION	UNIT	AMOUNT	SIZE (IN)	NOTES
DO NOT ENTER SIGN (R5-1)	EA	1	30 x 30	INCL. MOUNTING HARDWARE
NO PARKING ANYTIME SIGN (R7-1)	EA	2	12 x 18	INCL. MOUNTING HARDWARE
CONCRETE PLANTER	EA	4	-	INCL. PLANT MATERIAL, ROCKS, ETC.
TYPE 1 OBJECT MARKERS (OM1-1)	EA	16	18 x 18	INCL. MOUNTING HARDWARE
OBJECT MARKER SIGN (OM3-L)	EA	3	12 x 36	INCL. MOUNTING HARDWARE
LEFT TURN ONLY (R4-21)	EA	1	24 x 30	INCL. MOUNTING HARDWARE
EXCEPT BIKES PLAQUE (R3-7bP)	EA	4	24 x 12	
2" TELESPEAR SIGN POST	EA	5	-	QUICK-PUNCH, TELESPEAR OR ULTI-MATE
SQUARE POST ANCHOR	EA	3	-	INCL. MOUNTING HARDWARE
THERMOPLASTIC, EXTRUDED, SURFACE, PROFILED	FOOT	10	-	
CURB PAINTING - YELLOW	FOOT	130	-	
GREEN BICYCLE LANE, PREFORMED THERMOPLASTIC FILM	SQFT	325	-	
PAVEMENT LEGEND, TYPE B-HS: BICYCLE LANE STENCIL	EA	1	-	

- ## CONSTRUCTION NOTES
- ② INSTALL LEFT TURN ONLY SIGN (R4-21)
 - ③ INSTALL CONCRETE PLANTER
WITH TYPE 1 OR TYPE 2 OBJECT MARKERS
(OM1-1). MOUNT A MARKER ON NORTH,
SOUTH, EAST, AND WEST SIDE OF PLANTER.

OR SUITABLE ALTERNATIVE AS APPROVED
BY TRANSPORTATION AND MOBILITY
DEPARTMENT.
 - ④ PROTECT EXISTING SIGN
 - ⑤ INSTALL TYPE 3 OBJECT MARKER SIGN
(OM3-1), MOUNTED BELOW "EXCEPT BIKES"
PLAQUE.
 - ⑪ INSTALL WHITE BIKE LANE STANDARD STENCIL
(PER COB STD. DWG. R-43)
 - ⑫ INSTALL DO NOT ENTER SIGN (R5-1)
WITH EXCEPT BIKES PLAQUE (R3-7bP)
(PER COB STD. DWG. R-9)
 - ⑭ INSTALL NO PARKING ANYTIME SIGN (R7-1)
 - ⑳ INSTALL YELLOW CURB PAINTING
 - ㉑ INSTALL GREEN SUPPLEMENTED
BICYCLE LANE
(PER COB STD. DWG. R-44A)
 - ㉒ INSTALL 8" WHITE DOTTED LANE LINE
(PER COB STD. DWG. R-40, R-44A, R-44C)

- ## GENERAL NOTES
1. PROTECT ALL ABOVE AND BELOW GROUND UTILITIES WITHIN PROJECT VICINITY UNLESS OTHERWISE NOTED ON PLANS.
 2. MINIMUM CLEAR PATH OF TRAVEL FOR BIKES SHALL BE 6.0'.
 3. DISTANCE BETWEEN ADJACENT PLANTERS SHALL NOT BE MORE THAN 8.0' IN ANY DIRECTION.

90%
SUBMITTAL

 BEND BIKEWAYS NO. 1 TBKE
CITY CONSTRUCTED IMPROVEMENTS
INTERSECTION ENHANCEMENTS

CITY OF BEND _____ MODAL FILTERS
DESCHUTES COUNTY, OREGON

DESCHUTES COUNTY, OREGON

REVISIONS:

R1

2.

ကျ



**DAVID EVANS
AND ASSOCIATES INC.**
2843 NW Lolo Dr., Suite 275
Bend, Oregon 97703
Phone: 541.389.7614

DESIGNED BY: AEM

DRAWN BY: BIM

DATE: 11-13-13

SCALE: $1'' = 10'$

DATE: _____

VERIFY SCALES

0 [REDACTED]

BAR EQUALS ONE IN
ON ORIGINAL DRAW

SHEET:

C3

COB # 1TBKE

P:\B\NDX000001\32\0400CAD\SHEETS\RHNEIGHBORHOOD_GREENWAYS\C1.GRADING-BNDX00000132.DWG



CONSTRUCTION NOTES

- ① INSTALL SHARROWS (WHITE)
(SEE COB STD. DWG. R43-A)
- ② INSTALL 20 MPH SPEED LIMIT SIGN (R2-1) WITH
NEIGHBORHOOD GREENWAY PLAQUE
(PER COB STD. DWG. R-9)
- ③ PROPOSED LUMINAIRE (BY OTHERS)
SEE MISCELLANEOUS INTERSECTION PLANS

GENERAL NOTES:

- 1. PROTECT ALL ABOVE AND BELOW GROUND UTILITIES WITHIN PROJECT VICINITY UNLESS OTHERWISE NOTED ON PLANS.
- 2. IMPROVEMENTS SHOWN IN RED TO BE COMPLETED BY OTHERS.
- 3. SEE SHEET C7 FOR SUMMARY OF QUANTITIES FOR HARRIMAN GREENWAY

90% SUBMITTAL

BEND BIKEWAYS NO. 1TBKE
CITY CONSTRUCTED IMPROVEMENTS
NEIGHBORHOOD GREENWAY

CITY OF BEND
NW HARRIMAN ST.
DESCHUTES COUNTY, OREGON

REVISIONS:

1.	
2.	
3.	

DAVID EVANS AND ASSOCIATES INC.
2843 NW Lolo Dr., Suite 275
Bend, Oregon 97703
Phone: 541.389.7614

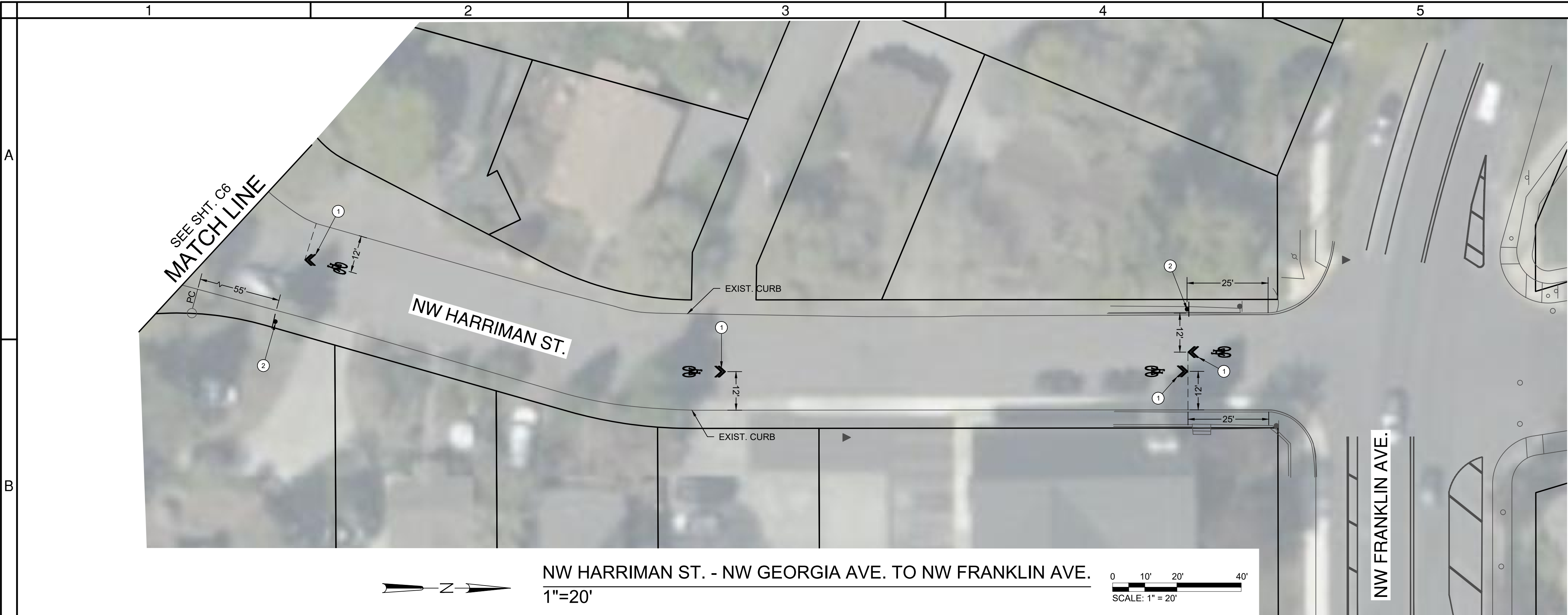
DESIGNED BY: AEM
DRAWN BY: RJM
SCALE: 1" = 20'
FILE: C1 GRADING-BNDX00000132.DWG
DATE: 03/13/2025

VERIFY SCALES
0 1"
BAR EQUALS ONE INCH ON ORIGINAL DRAWING

SHEET:
C6

COB # 1TBKE

P:\B\NDX000001\32\0400CAD\SHEETS\RH\NEIGHBORHOOD_GREENWAY\132.DWG



SUMMARY OF QUANTITIES - HARRIMAN GREENWAY				
ITEM DESCRIPTION	UNIT	AMOUNT	SIZE (IN)	NOTES
20 MPH SPEED LIMIT SIGN (R2-1)	EA	4	24 x 30	
NEIGHBORHOOD GREENWAY PLAQUE	EA	4	24 x 6	
2" TELESAR SIGN POST	EA	4	-	
SIGN FOUNDATION	EA	4	-	
SHARROW (STRAIGHT)	EA	9	-	
SHARROW (STRAIGHT AND RIGHT)	EA	1	-	

CONSTRUCTION NOTES

- ① INSTALL SHARROWS (WHITE)
(SEE COB STD. DWG. R43-A)
- ② INSTALL 20 MPH SPEED LIMIT SIGN (R2-1) WITH
NEIGHBORHOOD GREENWAY PLAQUE
(PER COB STD. DWG. R-9)
- ③ PROPOSED LUMINAIRE (BY OTHERS)
SEE MISCELLANEOUS INTERSECTION PLANS

GENERAL NOTES:

1. PROTECT ALL ABOVE AND BELOW GROUND
UTILITIES WITHIN PROJECT VICINITY UNLESS
OTHERWISE NOTED ON PLANS.
2. IMPROVEMENTS SHOWN IN RED TO BE
COMPLETED BY OTHERS.

90%
SUBMITTAL

BEND BIKEWAYS NO. 1TBKE
CITY CONSTRUCTED IMPROVEMENTS
NEIGHBORHOOD GREENWAY
NW HARRIMAN ST.
CITY OF BEND
DESCHUTES COUNTY, OREGON



REVISIONS:
1. _____
2. _____
3. _____

**DAVID EVANS
AND ASSOCIATES INC.**
2843 NW Lolo Dr., Suite 275
Bend, Oregon 97703
Phone: 541.389.7614

DESIGNED BY: AEM
DRAWN BY: RJM
SCALE: 1" = 20'
FILE: C1 GRADING-BNDX00000132.DWG
DATE: 03/13/2025

VERIFY SCALES
0 1"
BAR EQUALS ONE INCH
ON ORIGINAL DRAWING

SHEET:
C7

COB # 1TBKE

