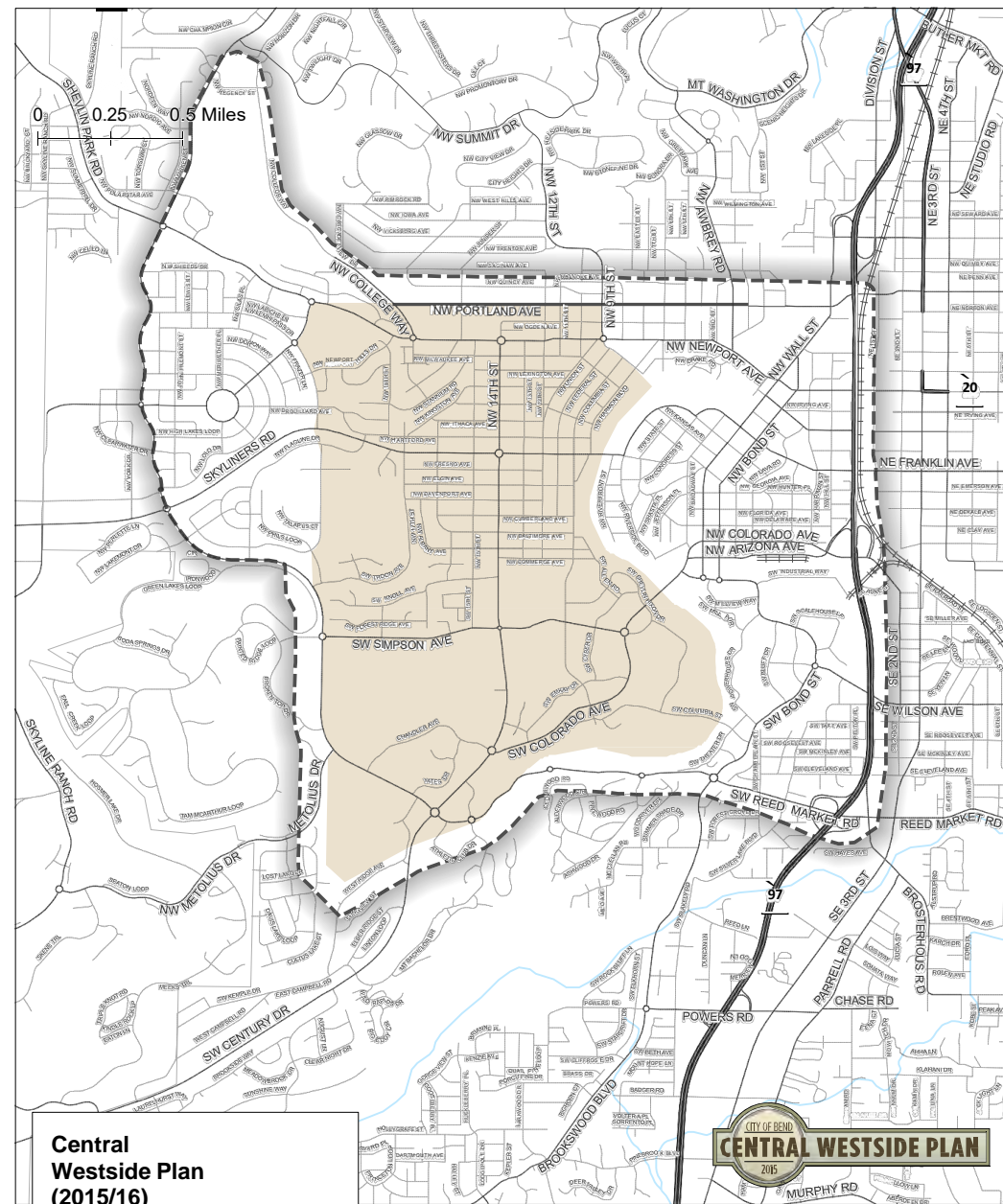


Bend's Central Westside



Timber Town

Legacies and Challenges

1813-2015

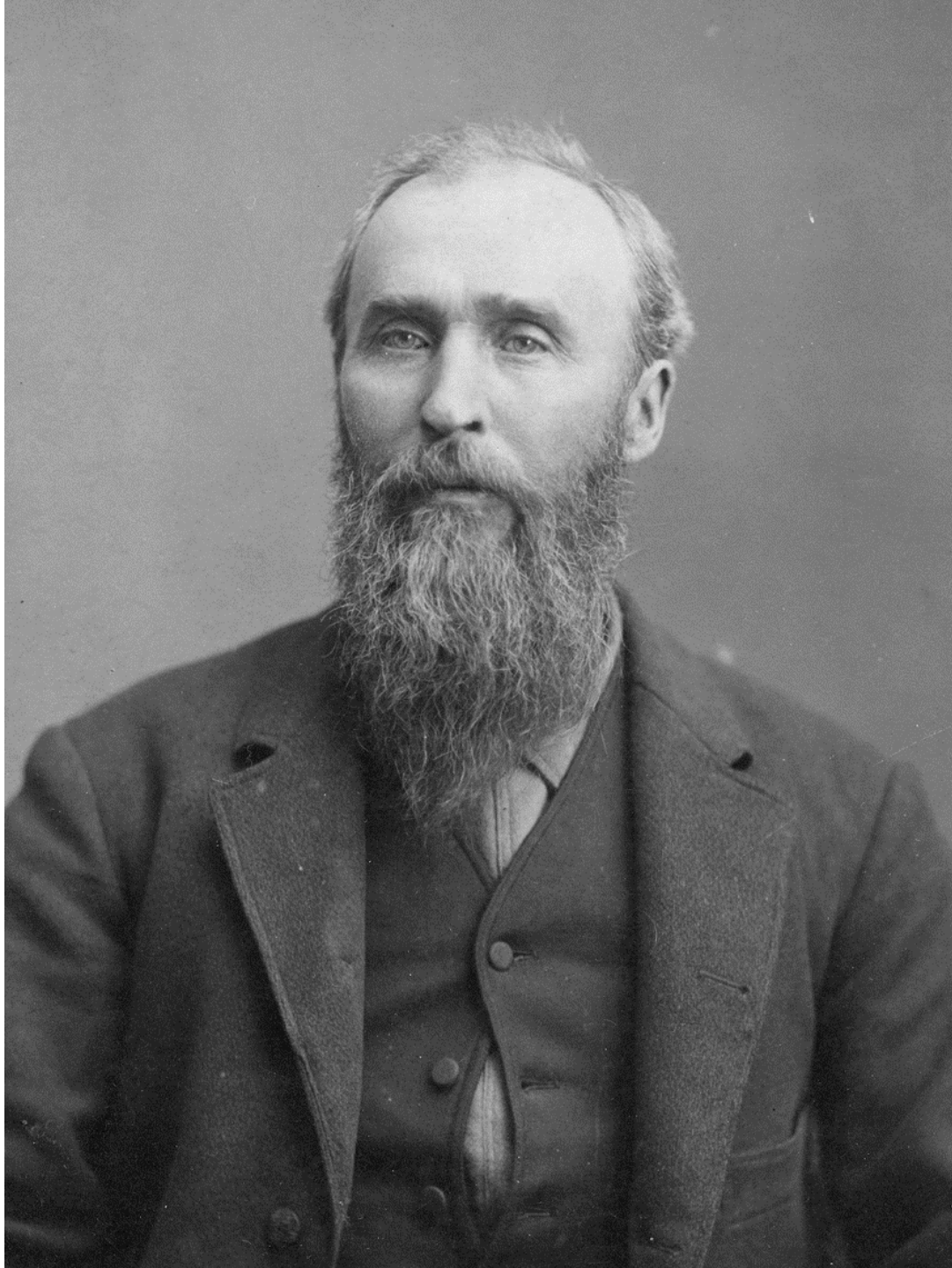


Central Westside Plan (2015/16)

-  Study Area
-  Transportation Study Area

Bend, OR

John Todd
Farewell Bend
Ranch 1877





Bend's First School 1883-1903

The Townsite of BEND

On the Deschutes River in Western Part of Crook
County, Oregon.

Center of the new Irrigation Development covering

250,000 ACRES OF RICH LAND

At Gateway to
the Great

DESCHUTES
PINE
Timber
Belt.....

The Town has Grown

almost entirely in two years, the post
office dating only from April 8, 1904.

Bend has excellent public schools
and complete public water works.

FOR INFORMATION
INQUIRE OF.....

**Central Oregon Banking
& Trust Company**

BEND, - OREGON



Bend Townsite Plat 1904

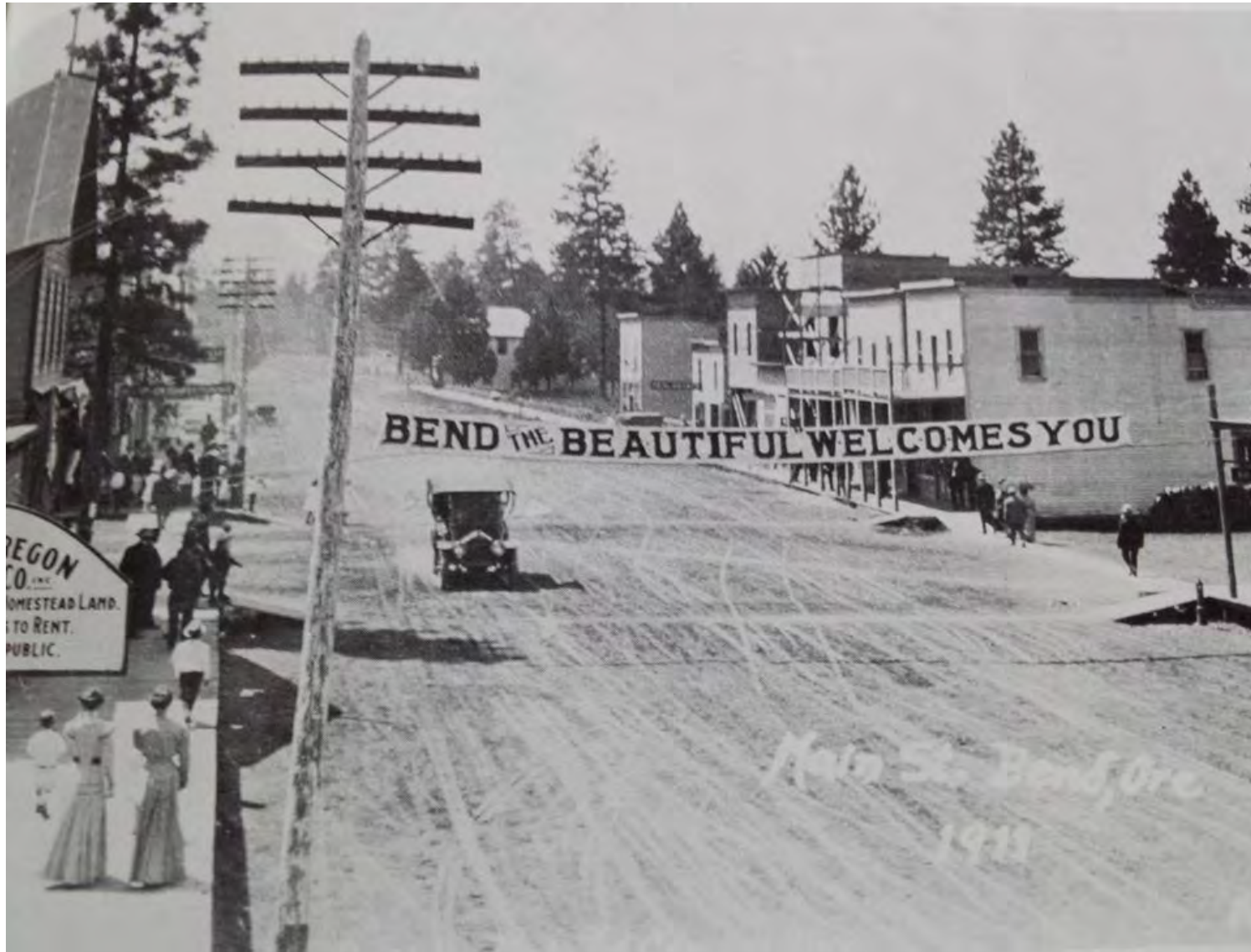


Goodwillie Home, 1905

1st Mayor. Arthur Goodwillie



River & Westside 1905



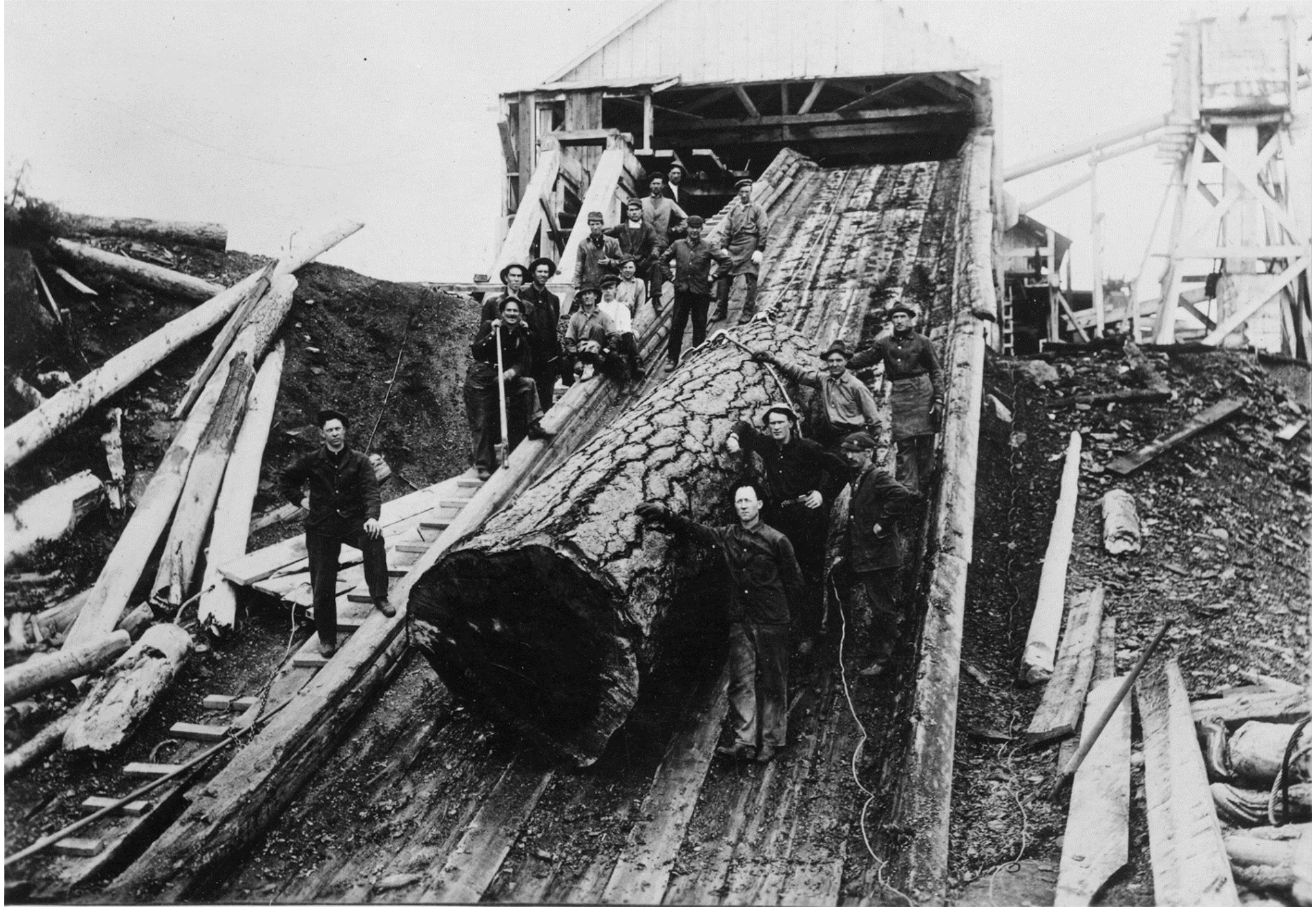
Bend the Beautiful 1910



Wall St., Bend 1910



Bend Co Mill 1909-15 (Columbia Park)





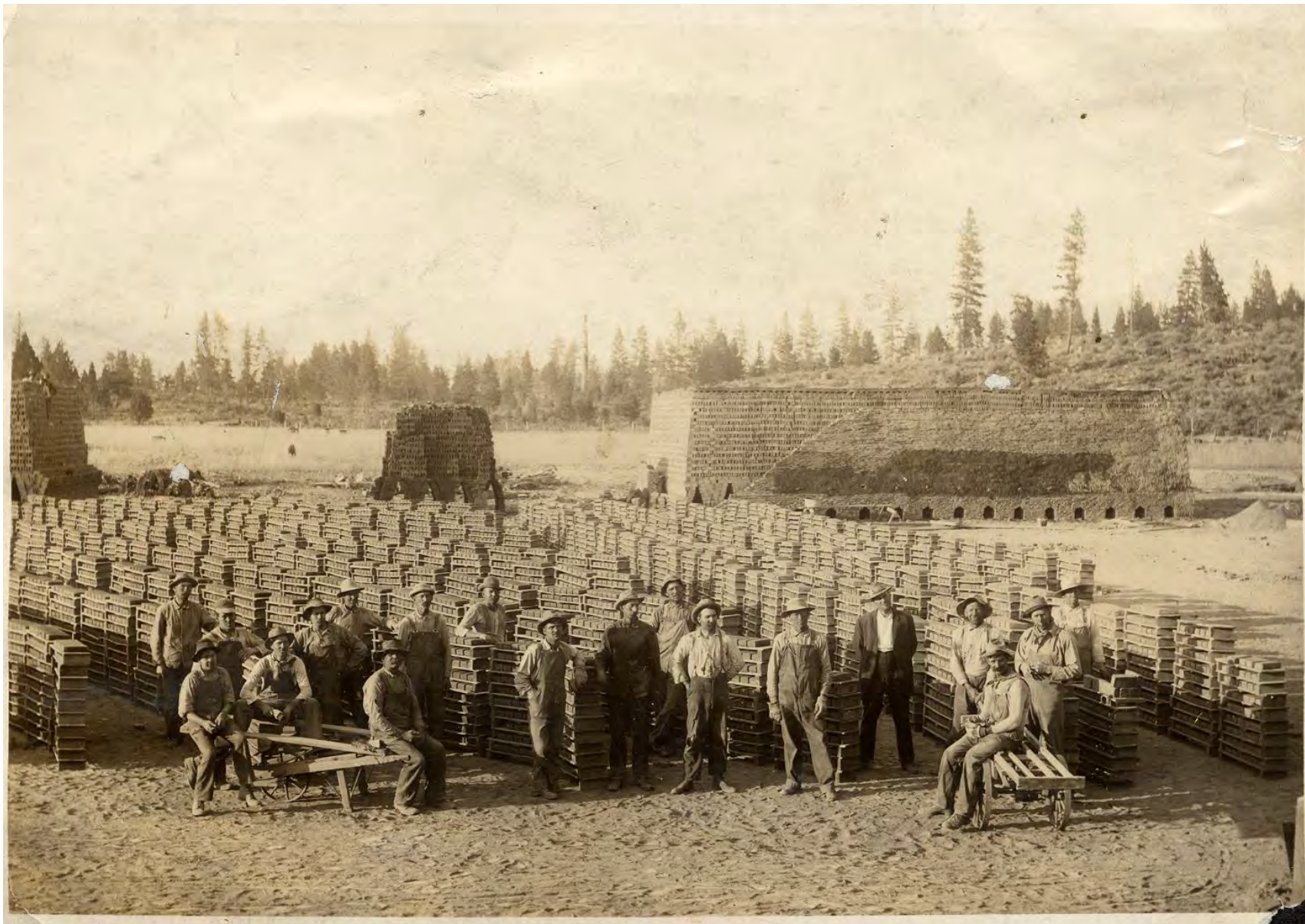
1909 SAW MILL BEND ORE.



Tuff Quarry c. 1910 (Columbia Park)



Bend Brick and Lumber 1911



Bend Brick and Lumber(Shevlin Park Rd.)



Newport Ave Dam 1909-10 (Bend Flour)



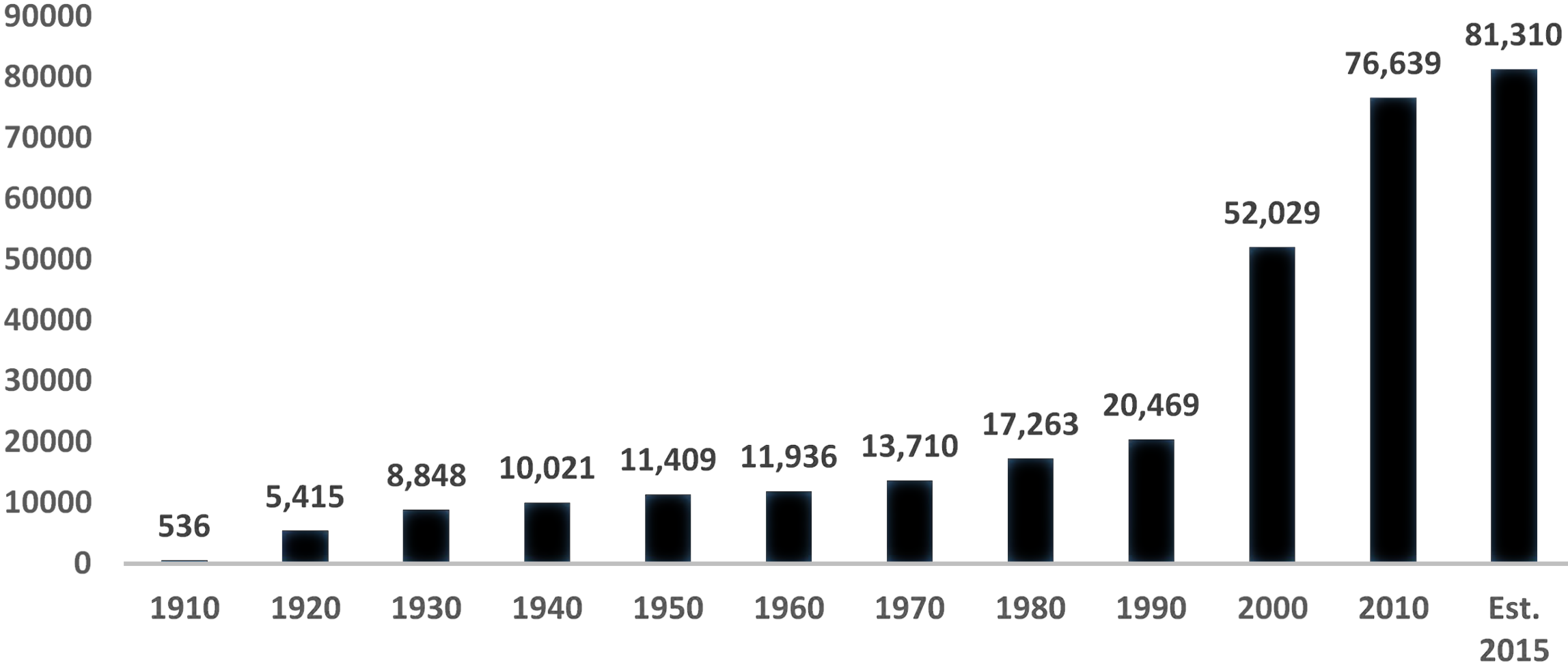
Newport Br.-Westside 1910s



Mirror Pond Paddlers 1910s

BEND POPULATION 1910-2015

SOURCE: US CENSUS, PSU POP. CTR.





Oregon Trunk Railway Depot 1911



**Newport Bridge-
Awbrey Butte
1917**

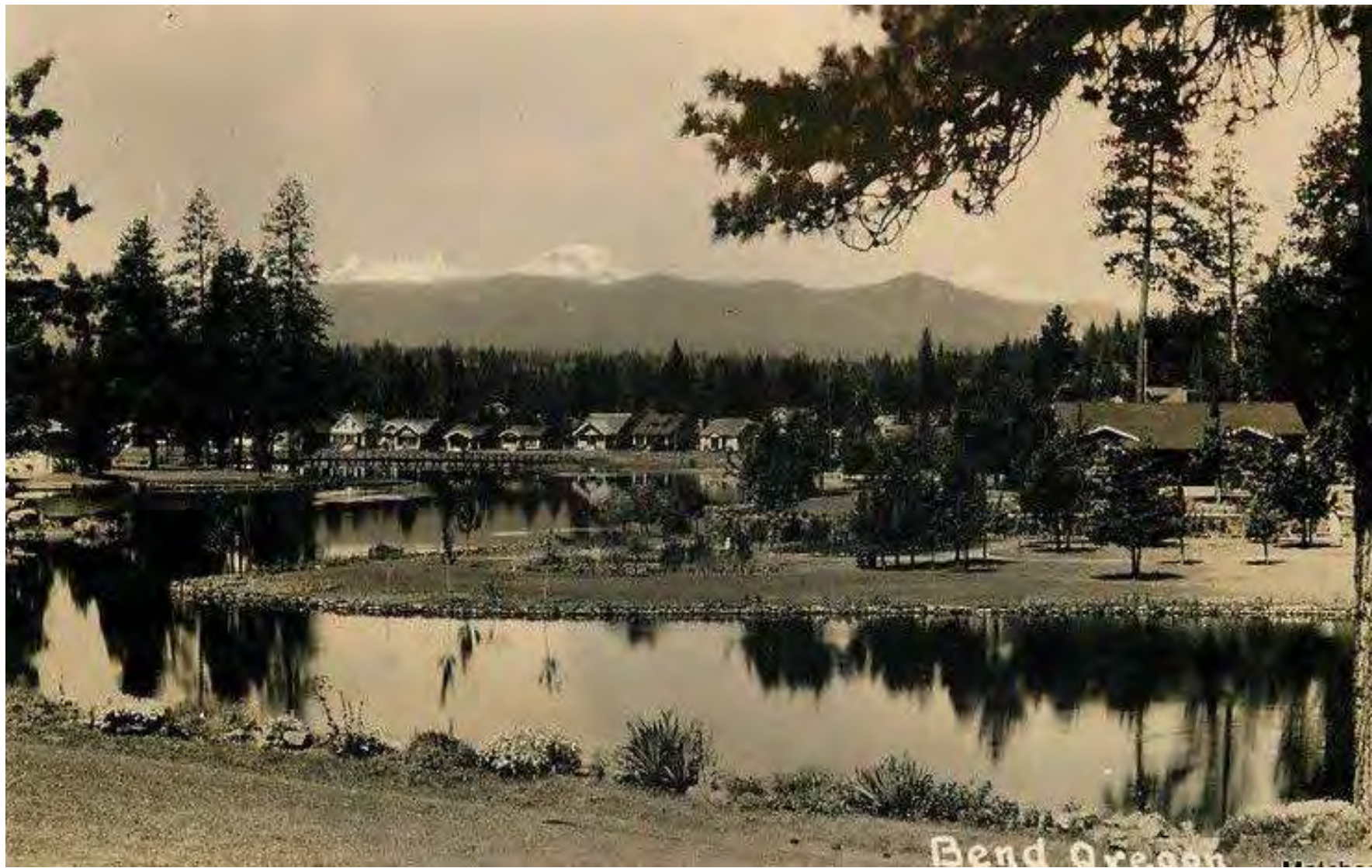


Delaware Ave 1921 Shevlin-Hixon Model Neighborhood



Sandlot Baseball

1917



Westside Homes



Stover Home NW Rocklyn 1911



Parker Home, NW 1st 1916



Wienecke Home NW Federal 1924



Simpson Jones Home NW Awbrey 1924



Hope-Van Allen Home NW Drake 1927



Reid School 1914-15



Priscilla Club, Teachers Ruth Reid 2nd from right

Reid School Teachers and Students





Kenwood School 1919



378. IN MIRROR LAKE PARK, BEND ORE.

D. C. MURPHY
FORELAND ORE.

Harmon Park Ducks 1920s



CASCADE RANGE FROM DESCHUTES RIVER BEND, OREGON 351

Eddy

Westside Homes, Mirror Pond & Kenwood School 1936



Kenwood Traffic Patrol 1950s



Harmon Park Exercise Class 1966



Jack Ensworth, Kenwood School National Teacher of the Year 1972

Kenwood School

Opening Day 2013





Bend High School 1925-1956



Bend High Christmas Program 1930s

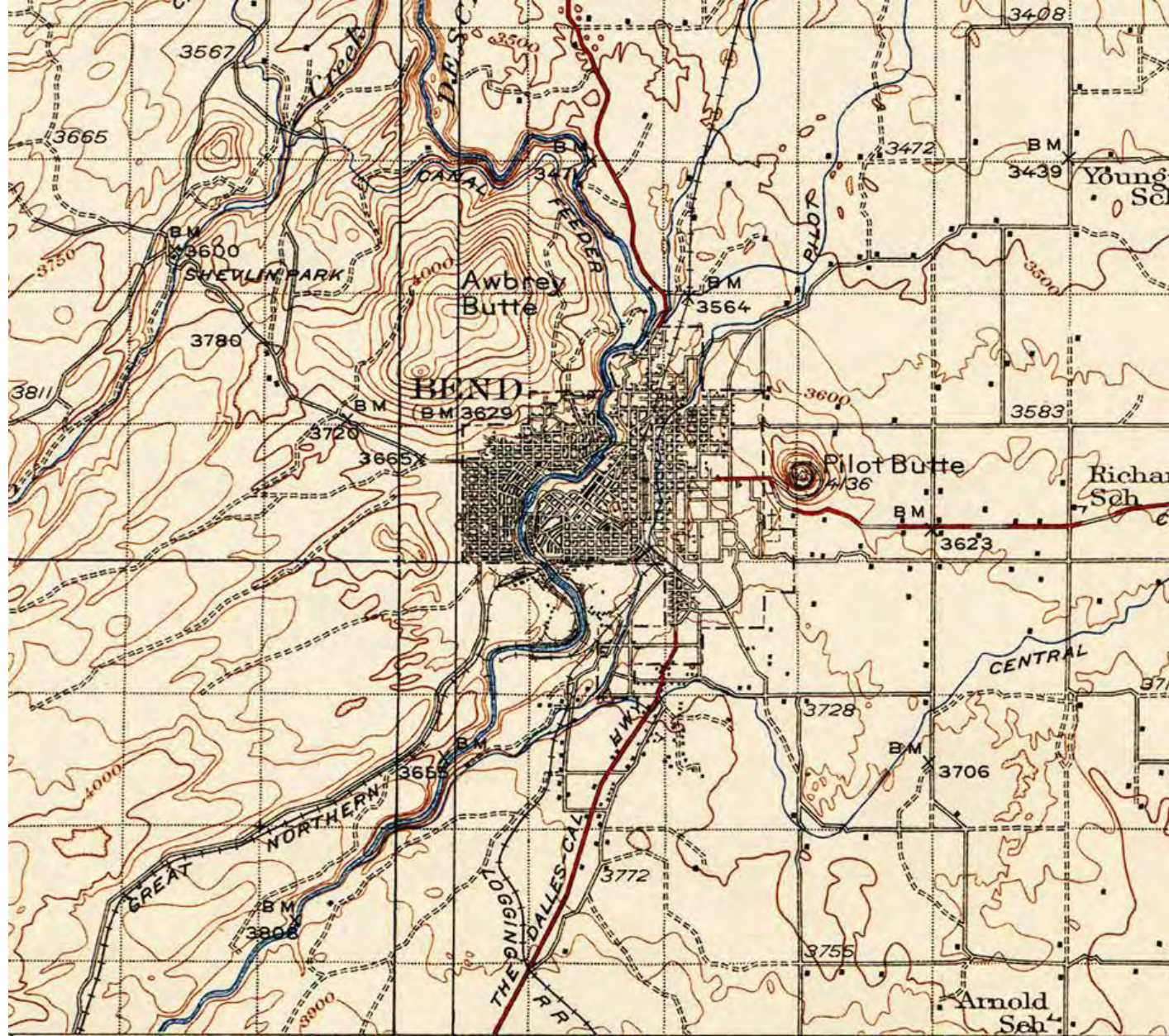


Old Bend High Today

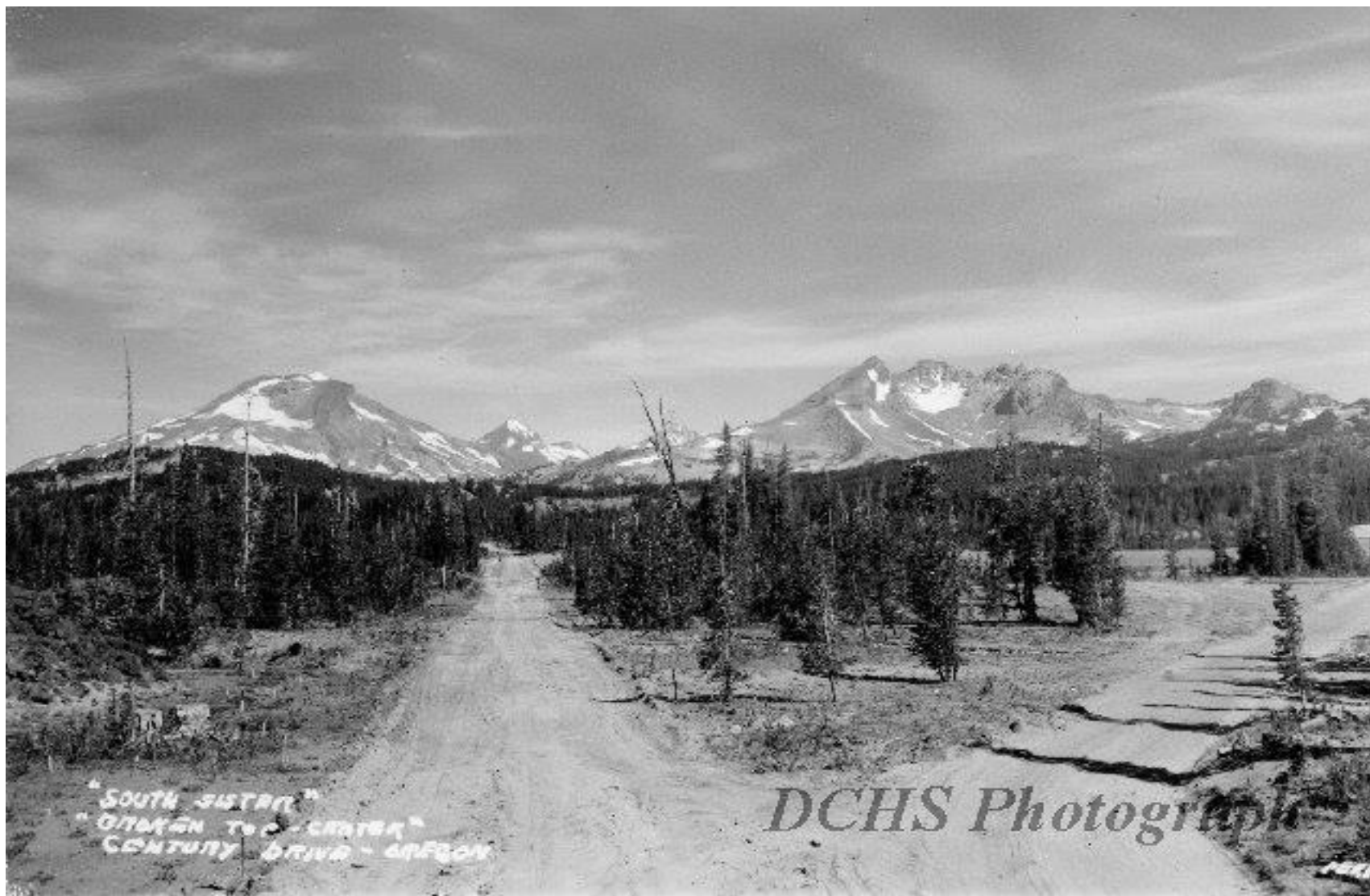


St Francis School

1930s



BEND 1926



Century Drive South of Bend 1920s



Mill Pond 1915 Shevlin-Hixon & Brooks-Scanlon



Shevlin-Hixon Bridge & foot commuters



Women's Crew, Box Factory 1917



Oregon Trunk Railway Trestle 1915-1991



Trestle Shevlin-Hixon and Brooks-Scanlon Mills



Trestle, Shevlin-Hixon Mill, Pilot Butte 1920s



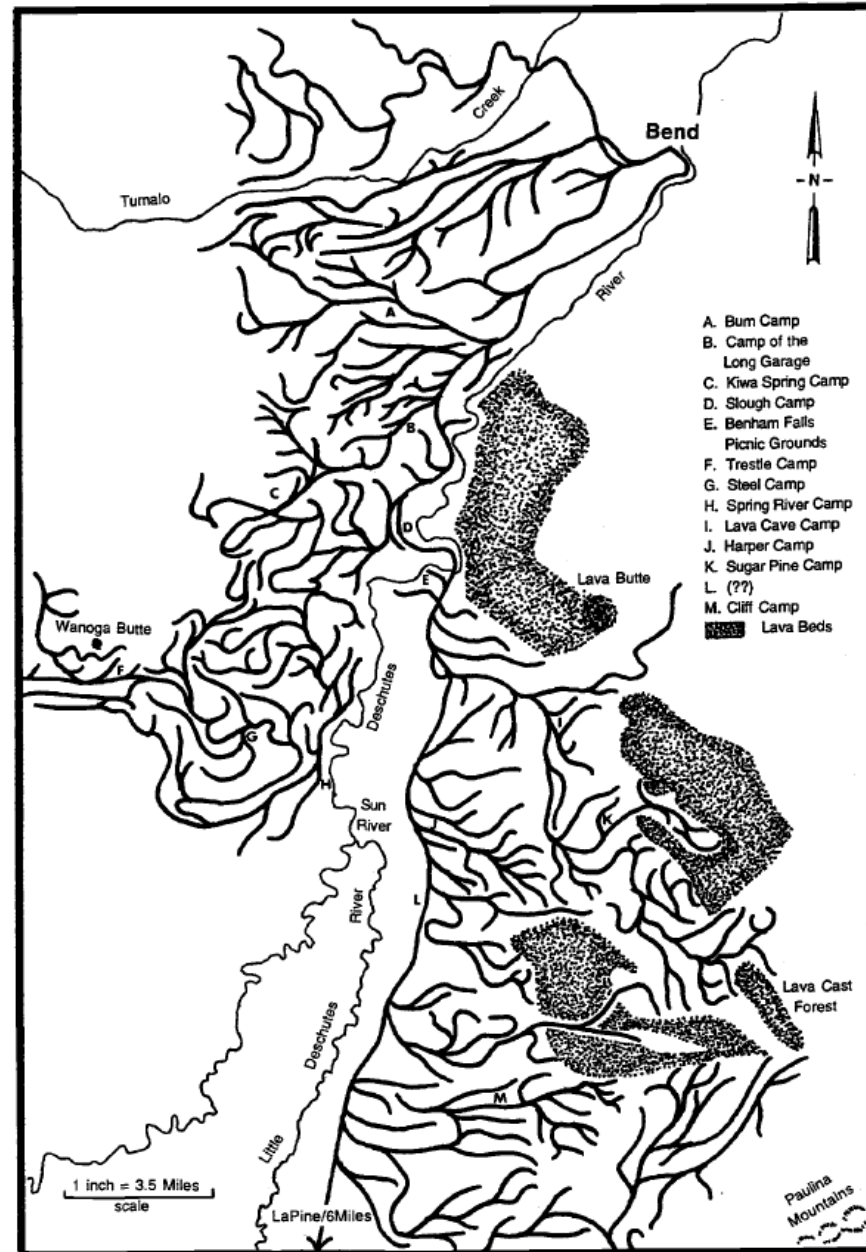
Shevlin-Hixon Mill view West 1930

© BRUBAKER
204



Shevlin Hixon Lumber Drying

Shevlin Logging



Hixon Railroads

Fig. 5.1: Shevlin-Hixon logging railroads and camps, 1916-1930 (Railroad locations courtesy of Robert A. Jensen. Camp sites provided by Oral History participants).





Shevlin Hixon Logging Railroad and Camp



Town of “Shevlin”

1948



Town of "Shevlin" Post Office

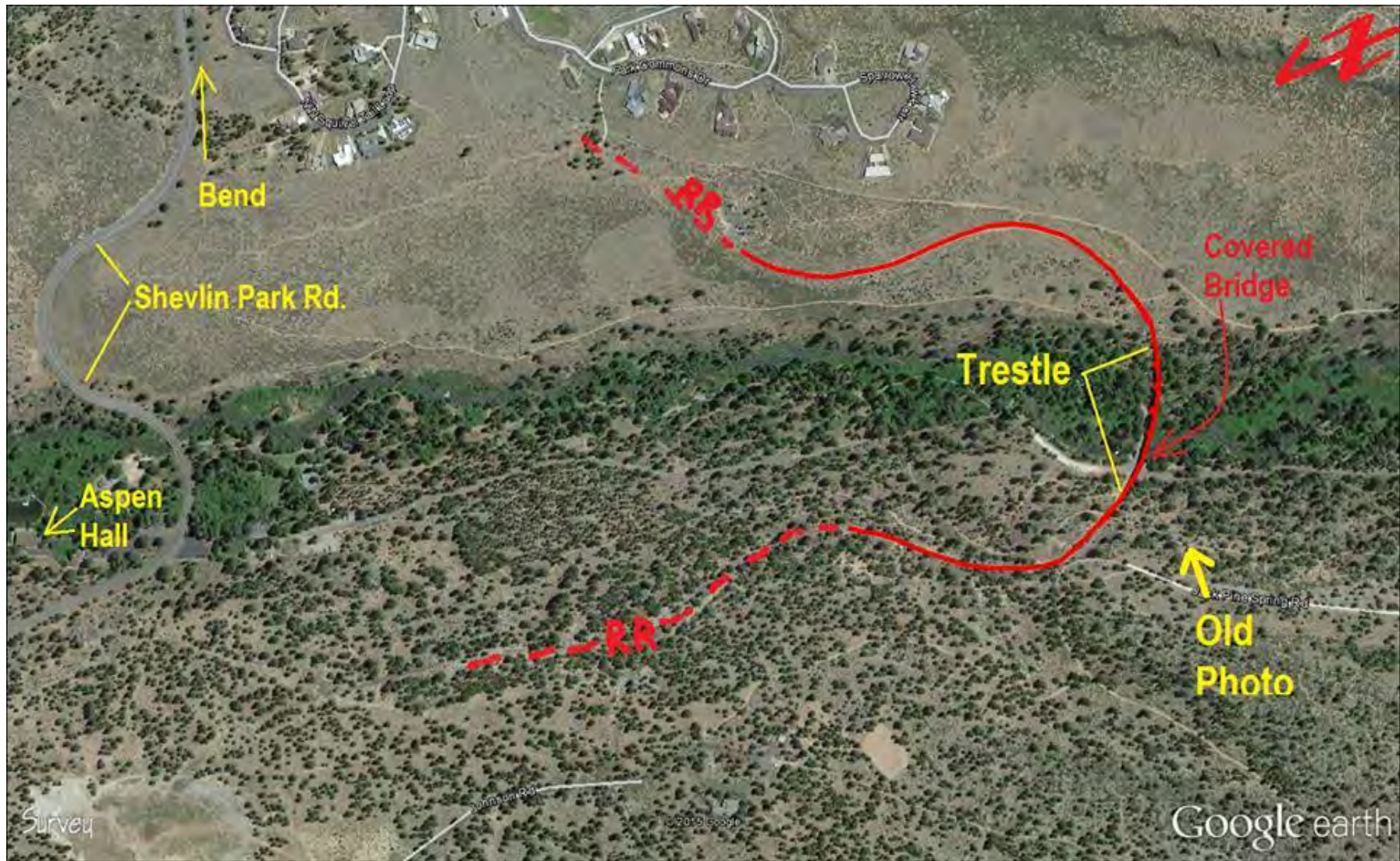
Martin E. Hansen Collection



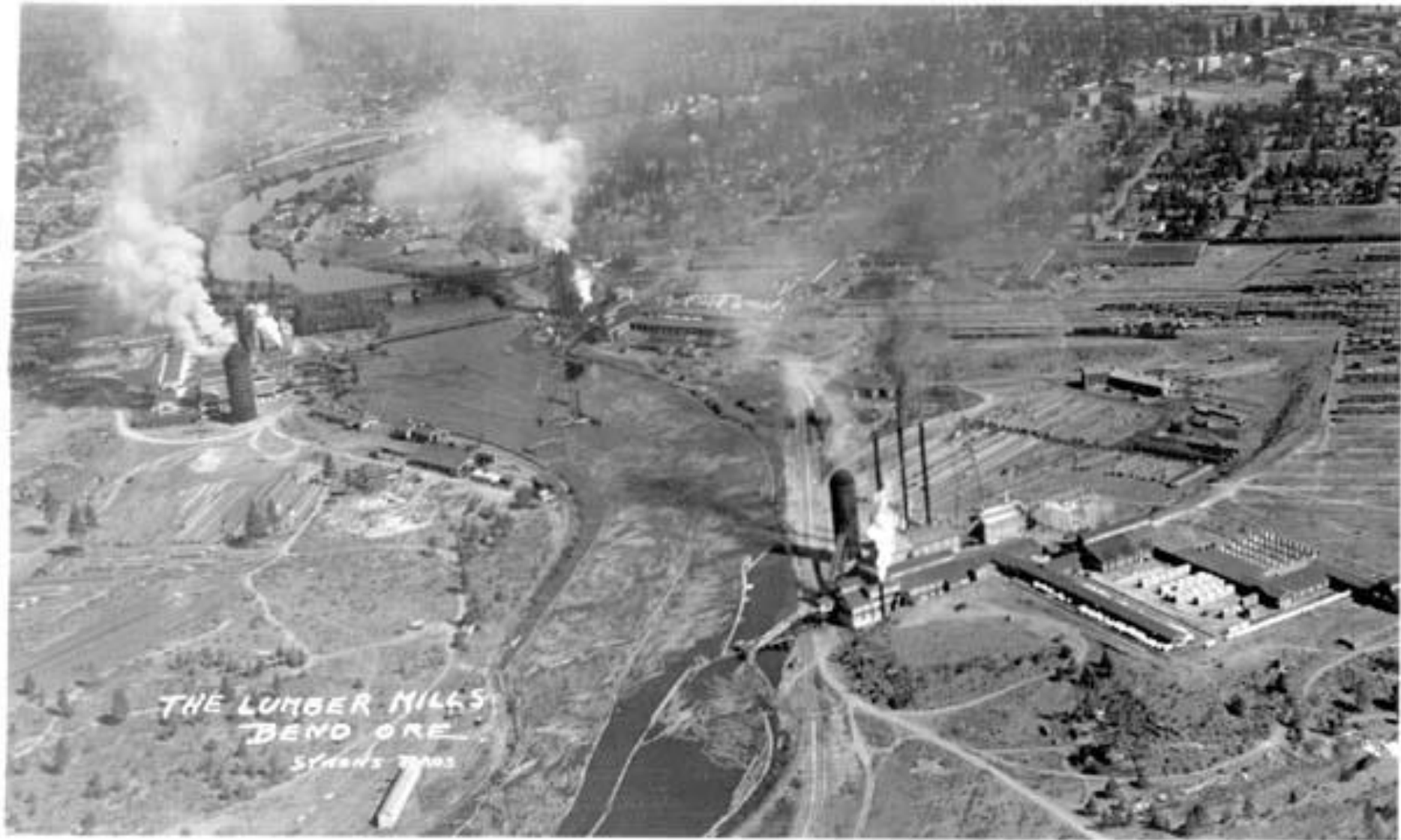
Logging Camp School



Shevlin Park Logging Rwy Trestle 1950s



Shevlin Park Railway Trestle Location



Shevlin-Hixon and Brooks-Scanlon Mills (view North)



Log Decks on River (Old Mill District)



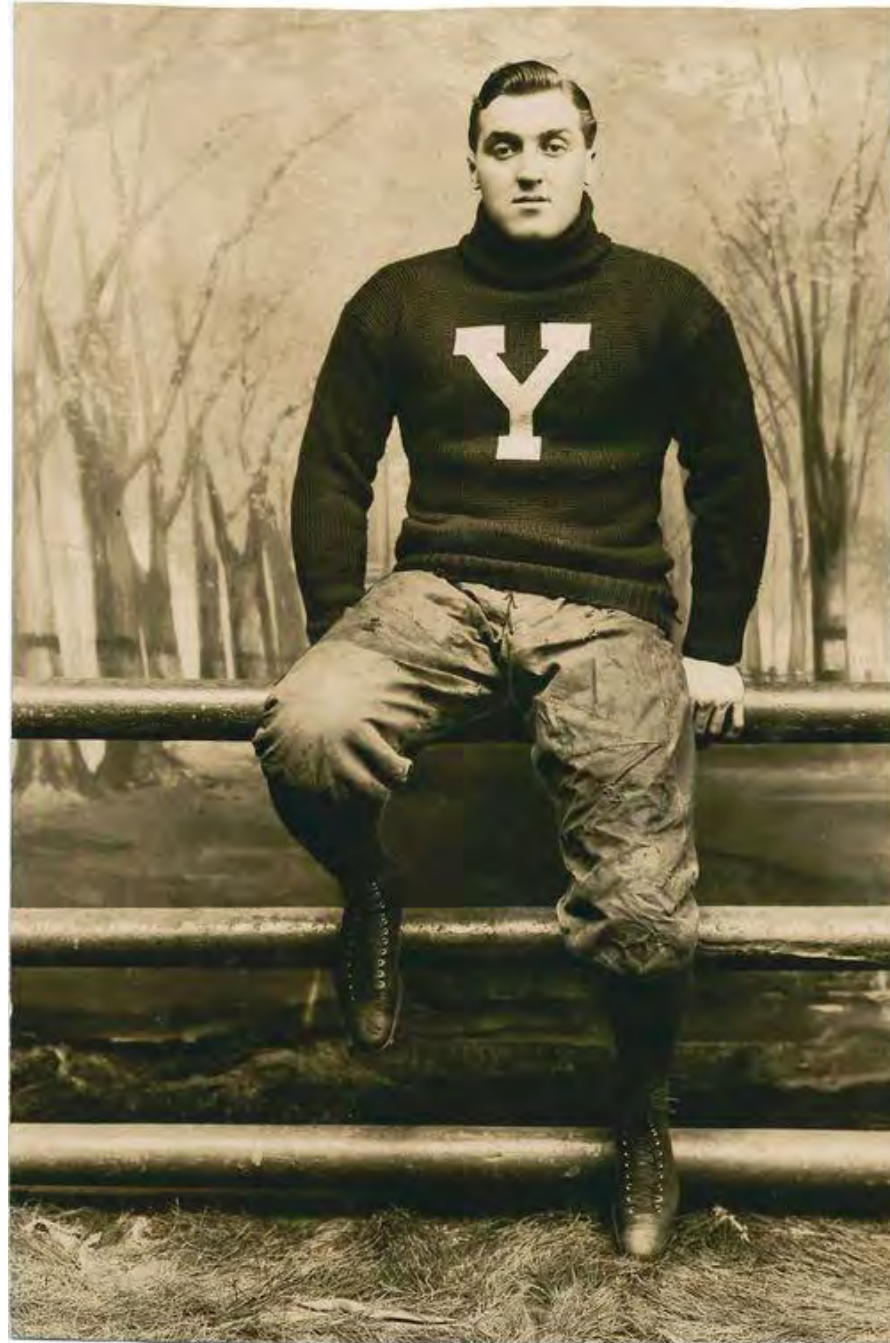
Brooks-Scanlon Mill A (View East to Pilot Butte)



Shevlin Hixon Band 1920s

Tom Shevlin

Mill Builder

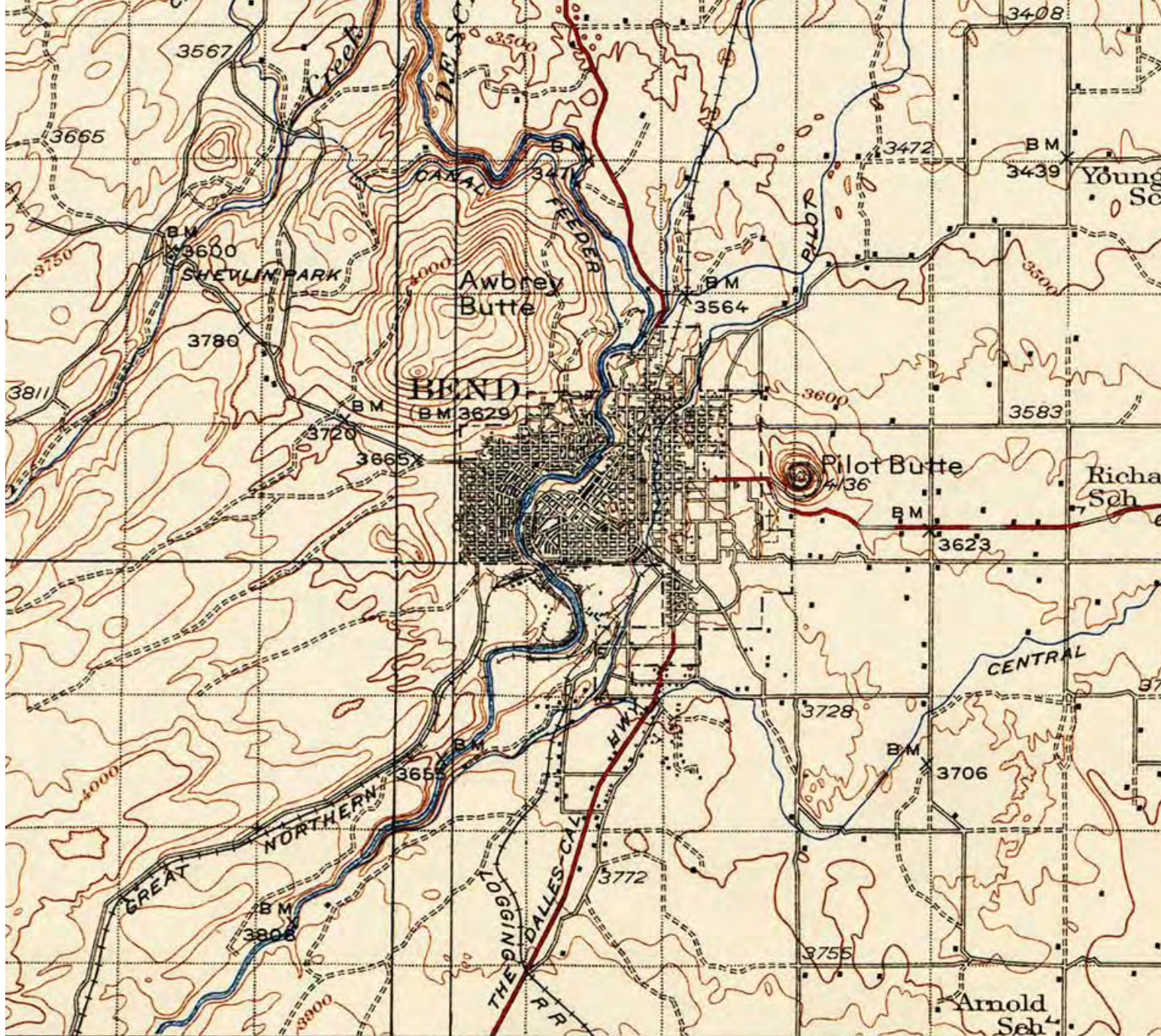


Yale 1905

Bend 1915

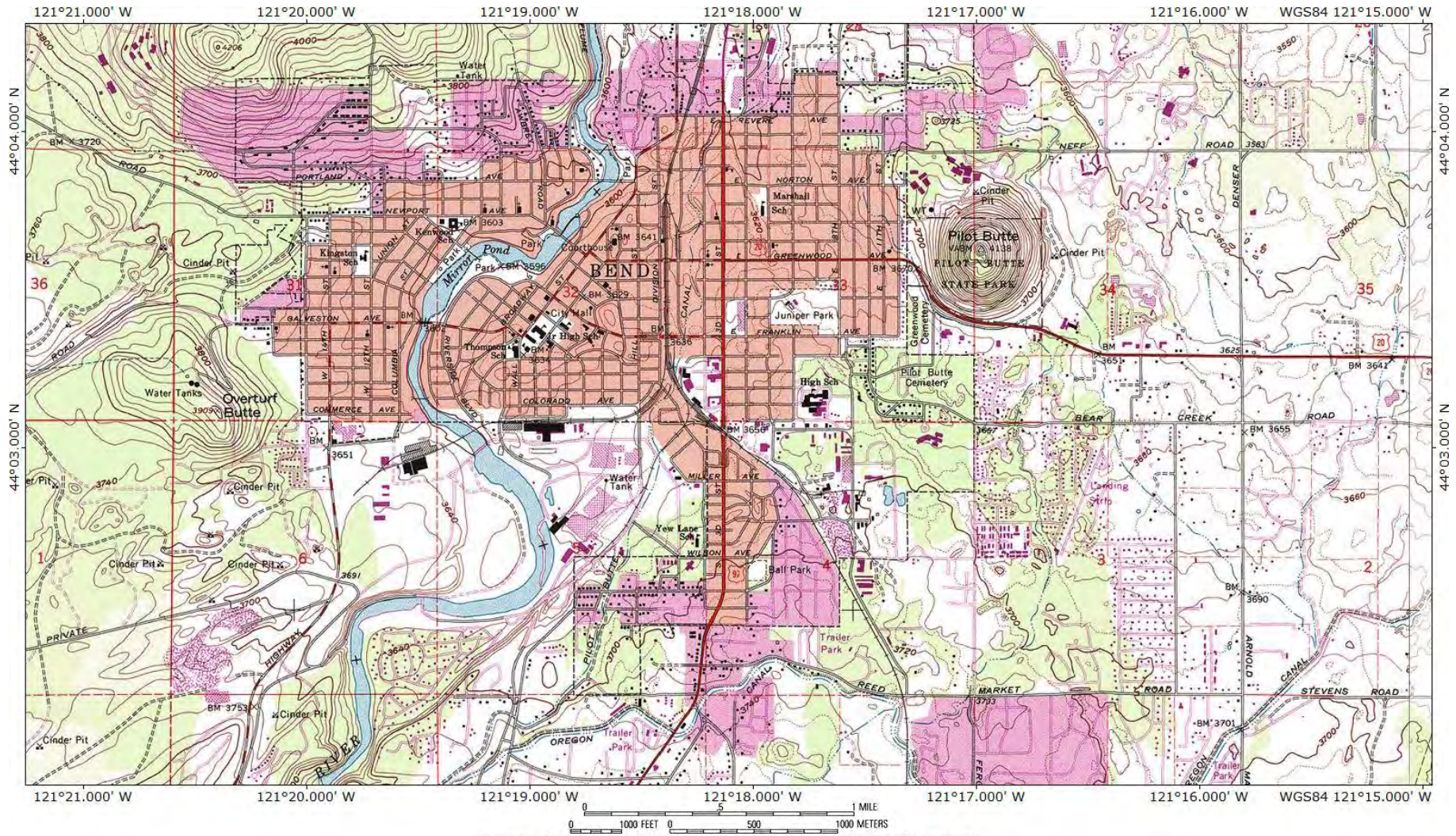


Shevlin-Hixon Manager's Home 1915 NW Congress



BEND

1926



BEND 1970S



Downtown, Mills and Central Westside 1920s View SW on Wall St.



Downtown- Westside

1920s

© BAUBAKER
214



“Pond Monkey” Dan McLennan 1935



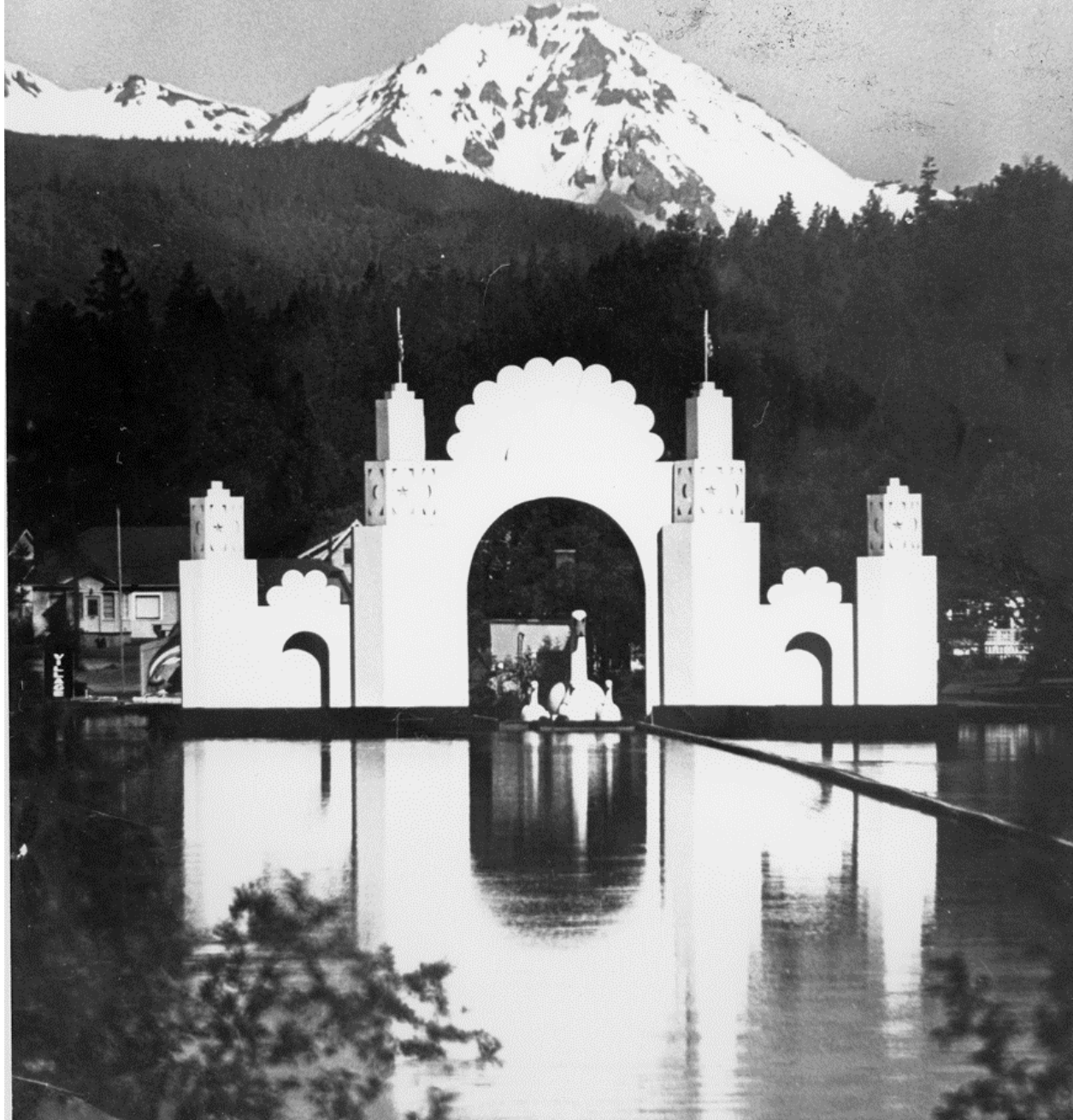
Mill Pond Visitors 1930s



Drake Park-Nashville Footbridge



Newport Ave. Bridge, Mirror Pond, Pilot Butte Inn 1939



Bend Water Pageant , Mirror Pond, 1933-1965



Shevlin Show Boat
July 4th 35
Bernd ore.

No 20

Photo Art
Studio
Bernd ore

Water Pageant 1935



Water Pageant 1937

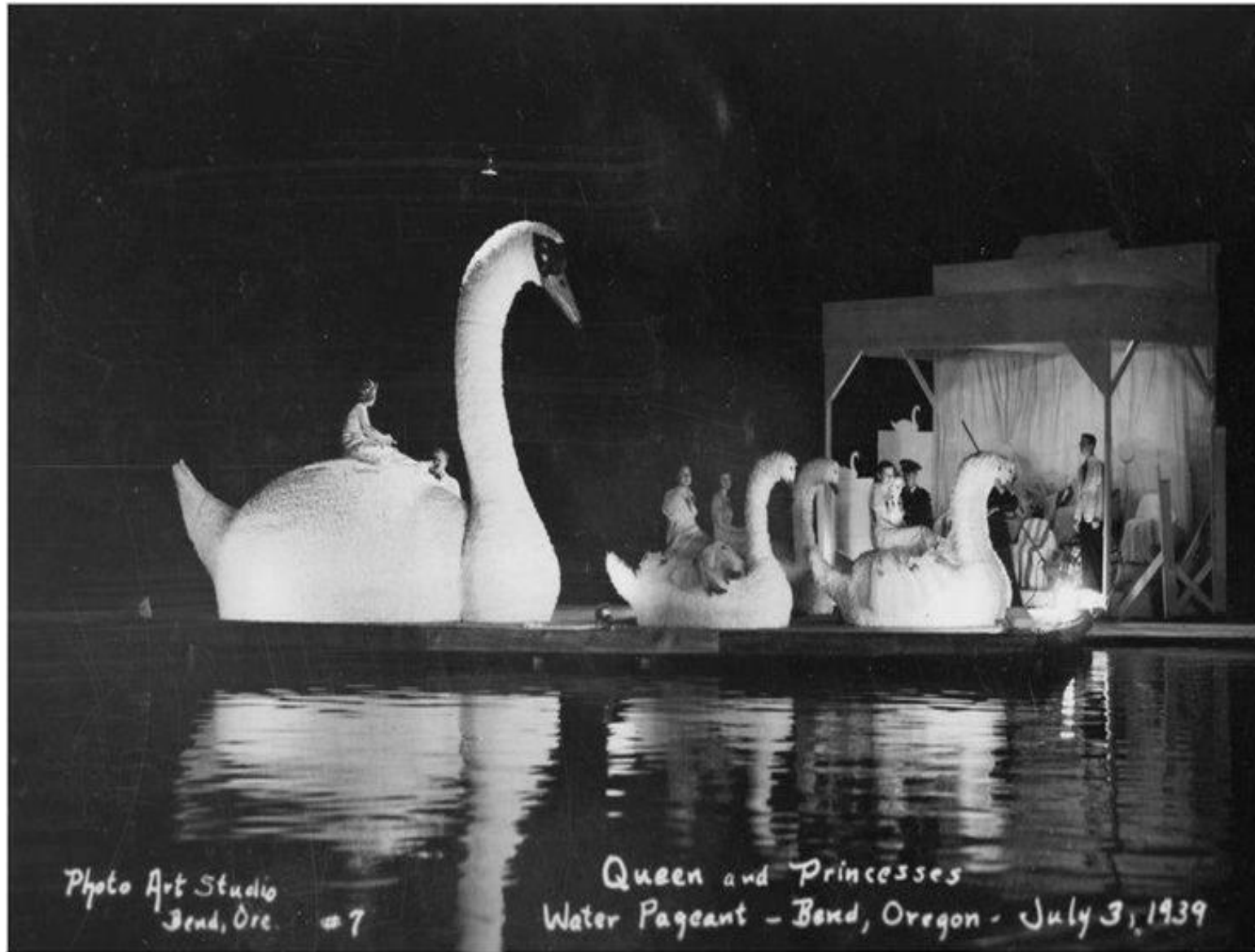


Photo Art Studio
Bend, Ore. #7

Queen and Princesses
Water Pageant - Bend, Oregon - July 3, 1939

Water Pageant 1939



Water Pageant 1939



Home of the
Mountain Burger

Ralph and Loretta Haie

14th at Galveston 1960s



Fire Dept. 1920s



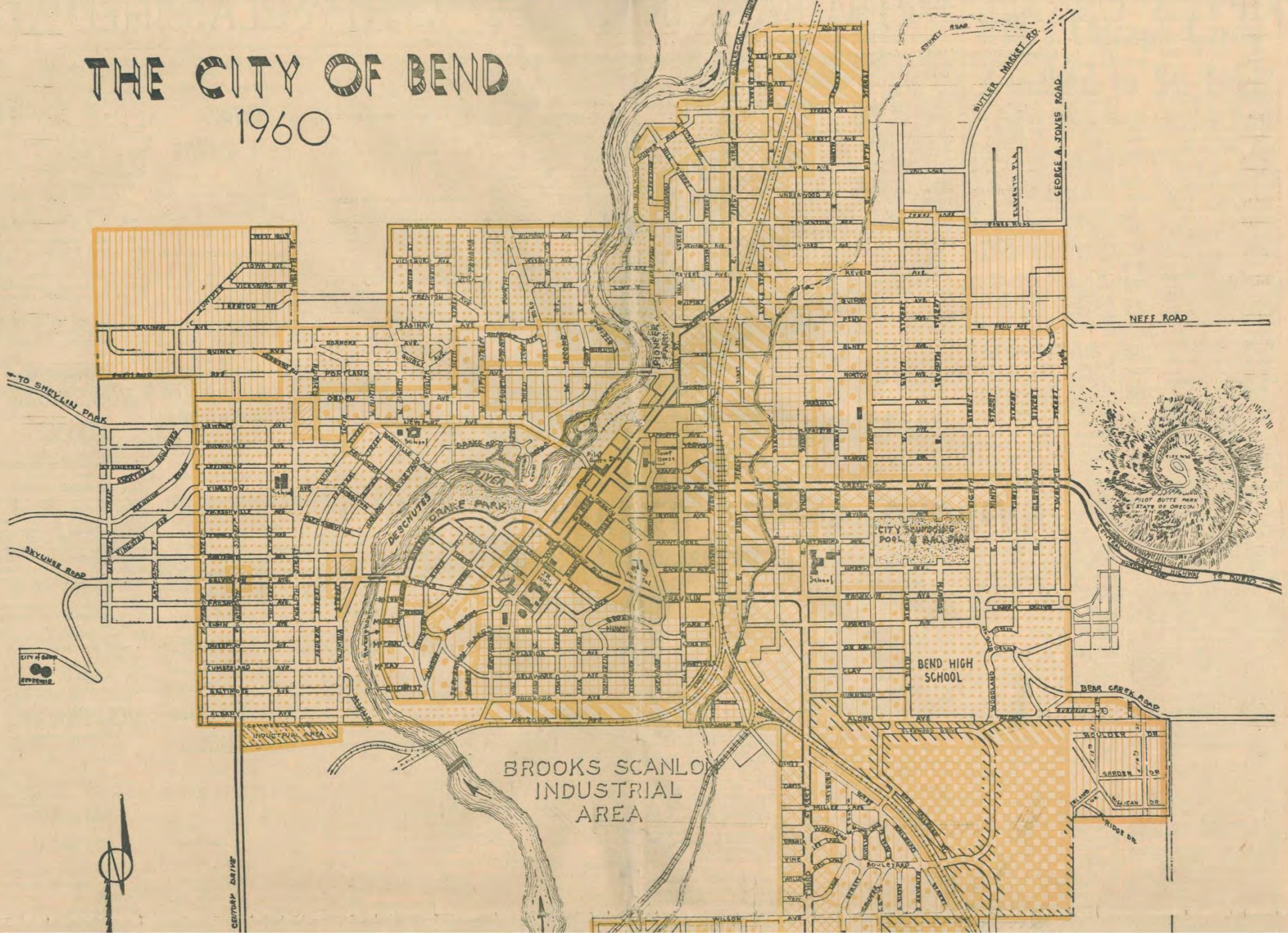
Awbrey Hall Fire 8-4-90



Awbrey Hall Fire

THE CITY OF BEND

1960



TO SKYLINE PARK

SKYLINE ROAD



CENTURY DRIVE

BROOKS SCANLON
INDUSTRIAL
AREA

BEND HIGH
SCHOOL

CITY SWIMMING
POOL & BATH

NEFF ROAD

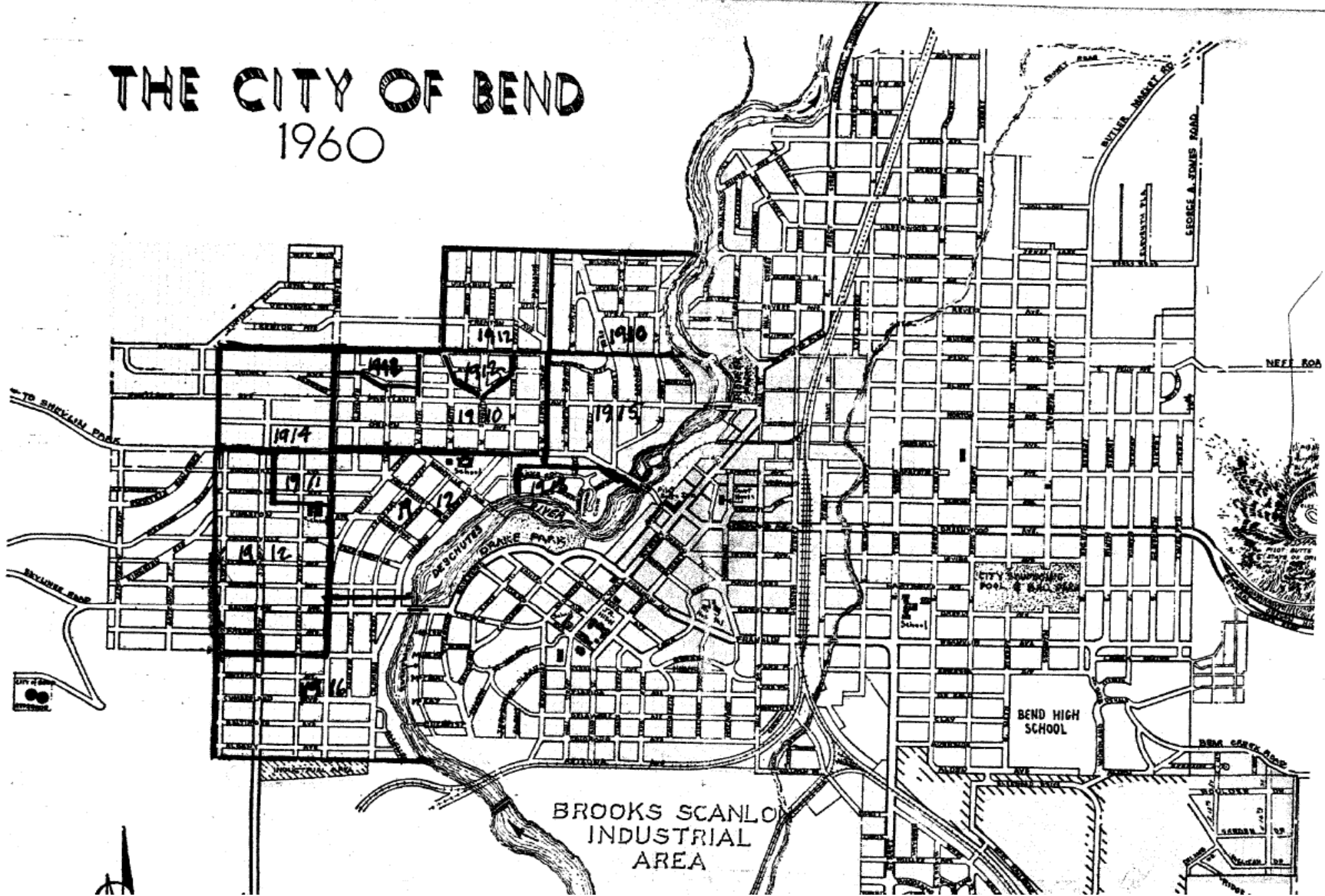
BUTLER MARKET RD
GEORGE A. JONES ROAD

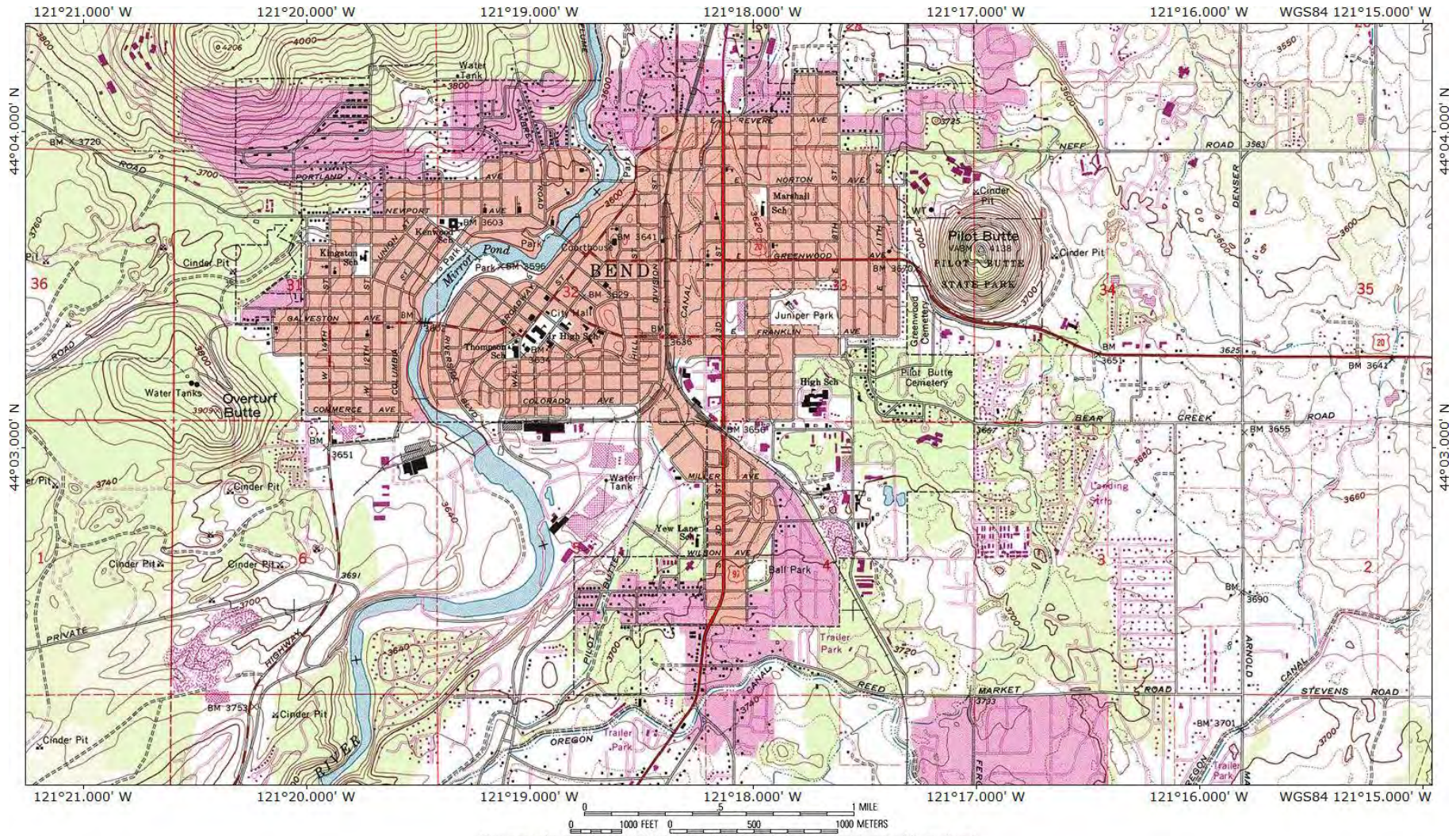
BEAR CREEK ROAD

WOLFEY ST
GREEN ST
MILCAN ST
RIDGE DR



THE CITY OF BEND 1960





BEND 1970S



Wall Street c 1910



Martin E. Hansen Collection

Wall St 1911



WALL St 1920s-30s View North



15-668 Wall Street - Bend, Oregon

Wall St 1930s View North



Bend, Oregon

Photo: Dave Luman

Wall St 1978



1960s View of

**Central
Westside**

Downtown

Brooks-Scanlon

IMAGE CREDITS

- Deschutes County Historical Society, Photo collection
- Vintage Bend, webpage
- Salem Public Library, Historical Images of Oregon
- New York Public Library, Digital Collection
- Or. Historical Topo Maps, Perry Casteneda Collection, U Texas Online
- Train Web
- Building Oregon , University of Oregon Library
- Vintage Oregon, University of Oregon and Oregon State Univ.
- Ian Poellet
- Bend Community Development Dept., Historic Preservation Webpage